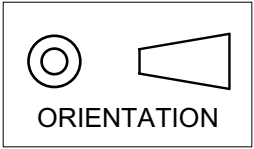
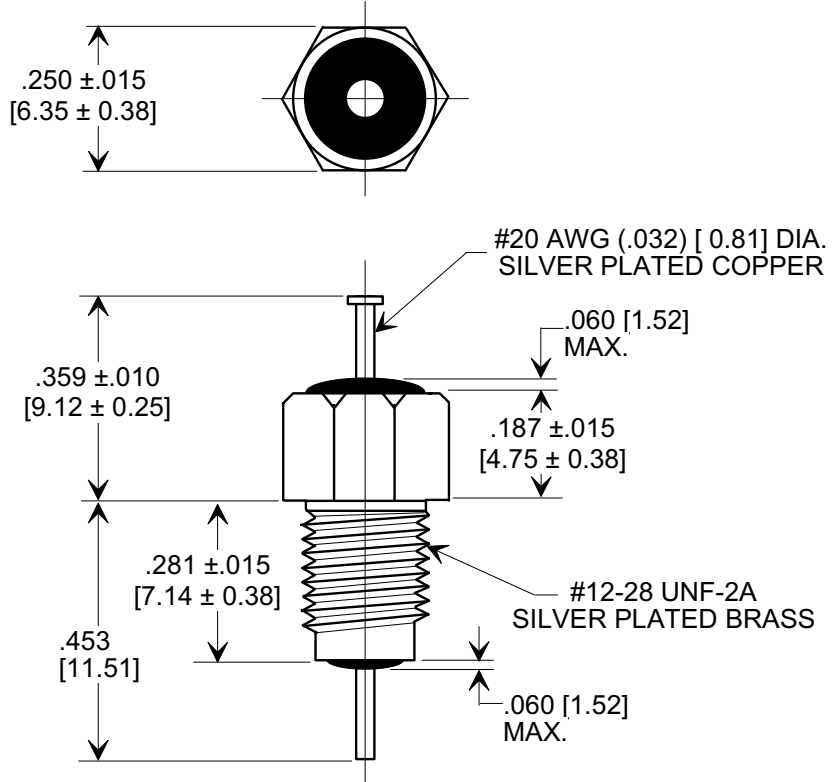
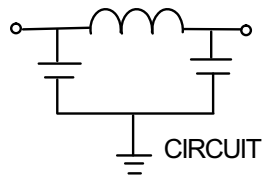


This drawing is the property of Tusonix, Inc., and may not be used, reproduced, published or disclosed to others without expressed authorization by Tusonix Inc.

MARKETING SALES DRAWING
 DIMENSIONS IN INCHES - DO NOT SCALE THIS DRAWING
 DIMENSIONS IN METRIC - []



Electrical Testing
 per Tusonix standard
 test plans and Mil-Std-202
 Test Methods.



- NOTE:
 1. HEX NUT AND LOCK WASHER SUPPLIED.
 2. MIL PART NO. TO BE STAMPED ON HEX FLATS, 2 CHARACTERS PER FLAT (MI/57/33/43/00/01)

1500	200	200	10	---	---	45	45
	85°C	125 °C		50 MHz	100 MHz	1 GHz	10 GHz
MIN. CAP. (pF)	WORKING VOLTAGE (WVdc)		CURRENT IAC (A) (O-400 Hz)	MINIMUM NO LOAD INSERTION LOSS (dB) AT 25°C PER MIL-STD -220			

X-2015 Rev-0
REVISION RECORD
 Original Release
 C.O. ECO-653

TOLERANCES unless otherwise specified		Title M15733/43-0001	
2 PLC. DECIMAL ±	N/A	BUSHING STYLE EMI FILTER	
3 PLC. DECIMAL ±	.031	Drawn L.E. 04-09-09	Scale 3X
ANGLES ±	N/A	Approved R.L. 04-09-09	
TUSONIX TUCSON, ARIZONA		A	4204-501