

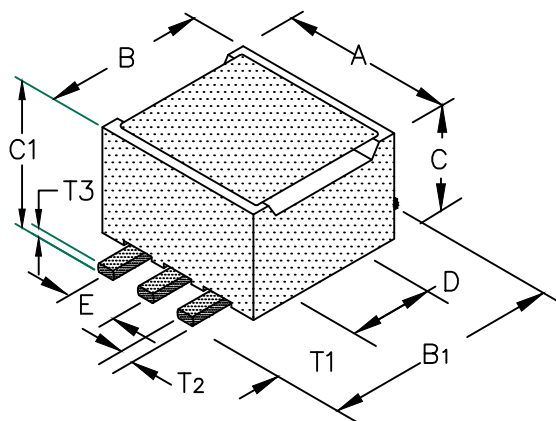
# 29F0318-1SR-10

## PHYSICAL DIMENSIONS:

A	4.83 [.190]	± 0.08 [.003]
B	4.50 [.177]	+ 0.08 [.003] - 0.10 [.004]
B1	7.04 [.277]	± MAX
C	4.19 [.165]	± 0.10 [.004]
C1	4.83 [.190]	± MAX
D	2.24 [.088]	± 0.08 [.003]
E	1.27 [.050]	± 0.13 [.005]

## WIRE DIMENSIONS:

T1	2.16 [.085]	± 0.25 [.010]
T2	0.50 [.020]	± TYP.
T3	0.25 [.010]	± TYP.



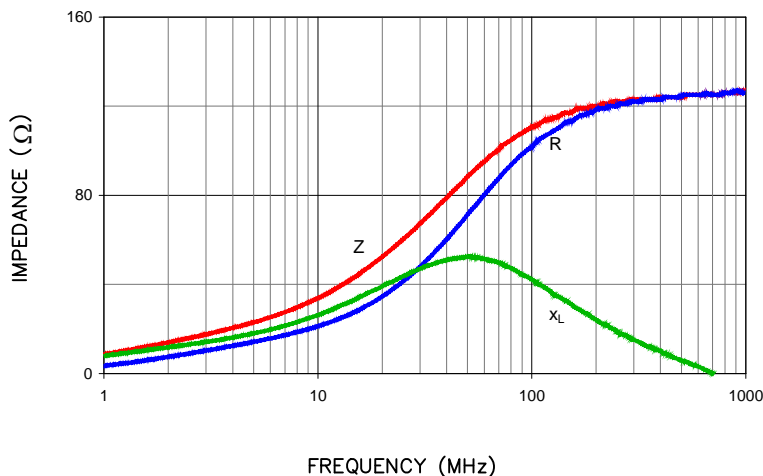
**UNCONTROLLED DOCUMENT**

ELECTRICAL CHARACTERISTICS:			
Z @ 100MHz (Ω)	DCR (Ω)	Rated Current	
Nominal	119		
Minimum	90		
Maximum	149	.01	6000 mA

NOTES: UNLESS OTHERWISE SPECIFIED

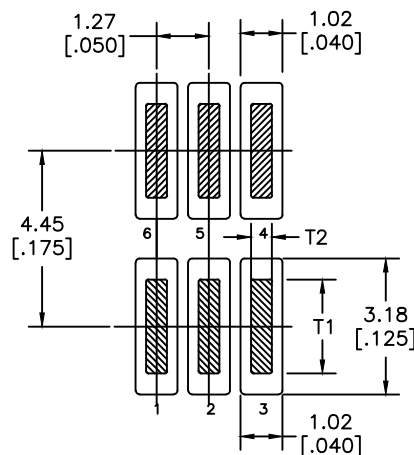
1. TAPED AND REELED per CURRENT EIA SPECIFICATIONS 13" REELS, 900 PCS/REEL.
2. COMPONENTS SHOULD BE ADEQUATELY PREHEATED BEFORE SOLDERING.
3. REF. CARRIER TAPE SPECIFICATION # CART318-13.
4. TERMINATION FINISH IS 100% TIN.
5. OPERATION TEMPERATURE (INCLUDING SELF-HEATING): -40 ~ +125°C.

|Z| , R, AND X vs. FREQUENCY

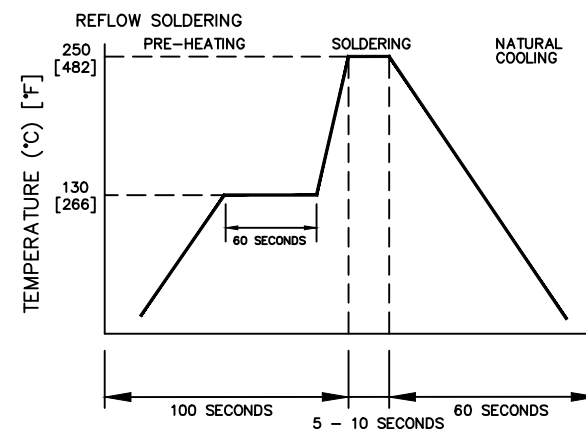


— Z — R — XL

LAND PATTERNS FOR REFLOW SOLDERING



RECOMMENDED SOLDERING CONDITIONS



DIMENSIONS ARE IN mm (INCHES).

This print is the property of Laird Tech. and is loaned in confidence subject to return upon request and with the understanding that no copies shall be made without the written consent of Laird Tech. All rights to design or invention are reserved.						
PROJECT/PART NUMBER: 29F0318-1SR-10						REV: E
E	ADD NOTE 5	08/30/12	QIU	DATE: 04/30/04	SCALE: NTS	SHEET: 1 of 2
D	UPDATE COMPANY LOGO	10/20/08	JRK	CAD #	TOOL #	
C	UPDATE COMPANY LOGO	04/24/07	JRK			
B	CHANGE TOLS ON E DIMS ADD ROHS	03/19/07	JRK			
A	ORIGINAL DRAFT	04/30/04	JRK			
REV	DESCRIPTION	DATE	INT	29F0318-1SR-10-E-1		

**RoHS**